

i3SYNC TOUCH

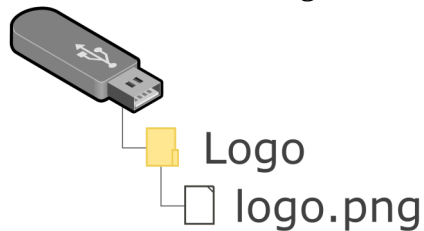
How to insert a company logo ?

(firmware version 1.0.5 or higher)

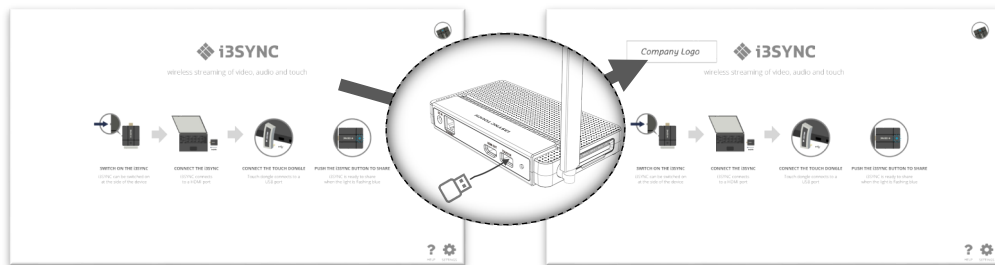
Create an image file of
380 by 93 pixels



Save the image containing the desired company logo as
.png , .jpg , or .bmp
Inside a "Logo" folder on a formatted USB thumb drive.



While on the Home Screen of the i3SYNC,
insert the USB thumb drive in the USB port of the i3SYNC receiver.



The company logo will automatically be loaded onto the background.



i3-TECHNOLOGIES

i3SYNC TOUCH

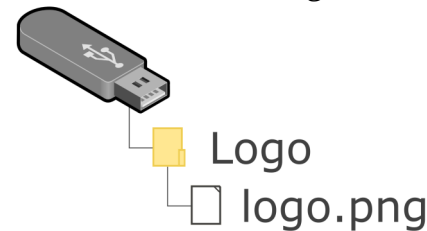
How to insert a company logo ?

(firmware version 1.0.5 or higher)

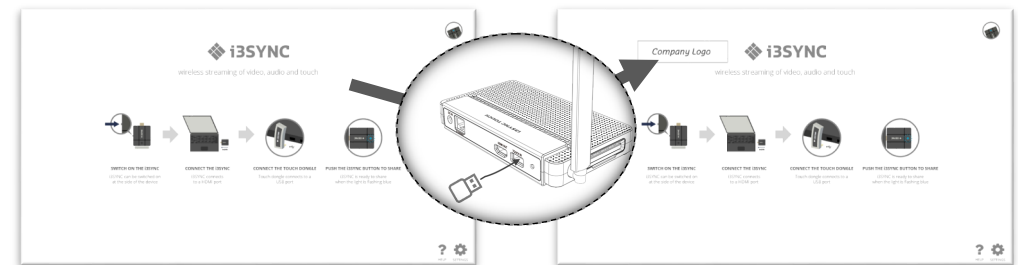
Create an image file of
380 by 93 pixels



Save the image containing the desired company logo as
.png , .jpg , or .bmp
Inside a "Logo" folder on a formatted USB thumb drive.



While on the Home Screen of the i3SYNC,
insert the USB thumb drive in the USB port of the i3SYNC receiver.



The company logo will automatically be loaded onto the background.



i3-TECHNOLOGIES